

WEIGHT tokai co.,ltd. to assist all safety policy

WEIGHT WEIGHT tokai co.,ltd.



Making the future society safer

Protecting people and cargo As a manufacturing company

We, Weight Tokai, have a corporate philosophy of 'to assist all safety policy', and as professionals in scaffolding and equipment installation work, our work maintains safety at manufacturing plants, mainly in Aichi Prefecture.

BCP(business continuity plan) is a plan prepared in advance to promptly resume business in the event of a crisis such as disasters or infectious diseases.

Preparing and training daily for BCP is called BCM (Business Continuity Management).

Companies must always manage objects and information they need in an emergency and verify whether the prescribed means and methods work. The critical point is to foresee danger and act in preparation.

We, Weight Tokai, promote activities to protect people and packages.

S·G·B business

Scaffolding related business

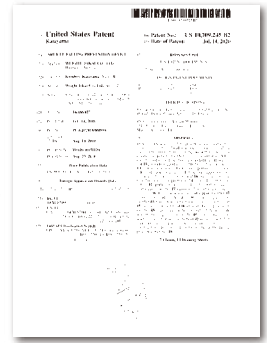
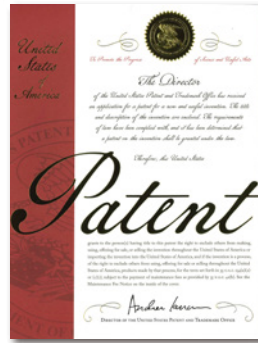
Machinery and equipment
installation work business.

A breakthrough system protecting people and cargo
 S·G·B(Safety Gate Box)
 Cargo fall prevention device for forklift trucks



By taking disaster prevention and mitigation measures to protect people and cargo, we continue to strive for a society where safety is the top priority. S·G·B(Safety Gate Box) was born from the desire to protect people and cargo. S·G·B is a rack with a cargo fall prevention gate exclusively for forklifts. Various effects can be expected through adoption.

See also HP.



Machine Name	S·G·B
Mass	280 kg
Guarantee period	1 year

WEIGHT tokai co., ltd.
<https://www.weight.co.jp>

S·G·B® is entirely made-to-order, and the size design is free of charge (budget is negotiable).
 ※A separate fee is charged for size design changes.

Definitions that enhance an organization's ability to continue business (Safe, secure and reliable)

ISO22301:2012

STEP1 **B C P** Business continuity planning

A plan that guides the organization to restore, restart, and recommence to a predetermined level in response to business interruptions and obstructions.

STEP2 **B C M** Business Continuity Management

Management for comprehensive and integrated business continuity, including continuous improvement from the formulation of a business continuity plan to introduction, operation, and review as a company works on business continuity.

STEP3 **B C M S** Business Continuity Management System

A section of the overall management system responsible for establishing, implementing, operating, monitoring, reviewing, maintaining, and improving business continuity.

Benefits of introducing S·G·B

Safety measure

In the warehouse, accidents due to falling cargo continuously occur. Ensuring the safety of workers and protecting cargo from damage due to falls is essential. Since S·G·B has a movable panel attached to the rack body to prevent falling, safety measures can be adopted simply by installing the rack.

Earthquake disaster measures

When earthquakes take place, secondary disasters are incurred due to large amounts of cargo. In some cases, the cargo may hit the worker directly, or falling cargo may prevent the evacuation route from being secured and delay the escape. Although when it will occur is unknown, measures need to be taken in the likely event of a big earthquake.

Work efficiency

Designed for work efficiency for a forklift, side panels and rear panels are installed, so they do not hit the racks on both sides or the back, and the bottom plate can be temporarily placed. Since the gate opens and closes with a soft close specification, impact and noise are significantly reduced.

No power supply required

S·G·B moves using the principle of leverage, so no power supply is required. When you put the load, the gate closes, and when you raise the load, the gate opens. Since it does not require a power supply, it can be installed anywhere and can operate even during a power outage. Ideal for safety and earthquake disaster measures.

For safety measures that increase corporate value, please allow us to collaborate in disaster prevention, disaster mitigation, safety, and business continuity planning!

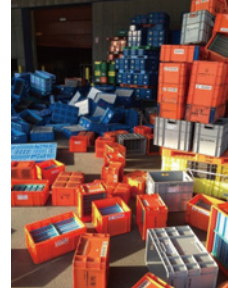
Safety measure

Japan is a country with many earthquakes.
 However, does it not seem that safety assurance and earthquake disaster countermeasures in warehouses are currently insufficient?

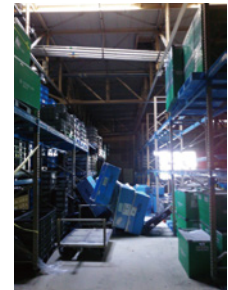
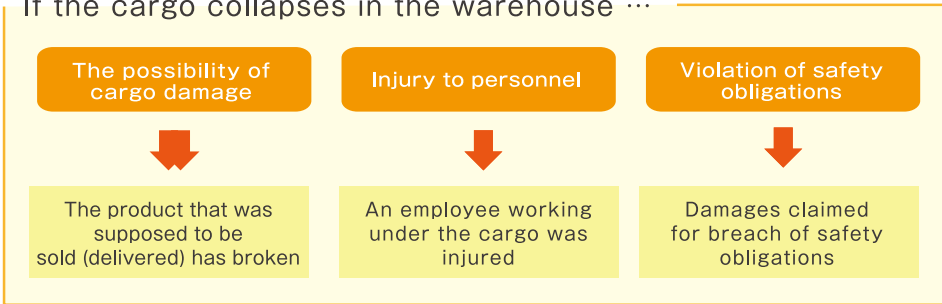


But if an accident actually occurs...

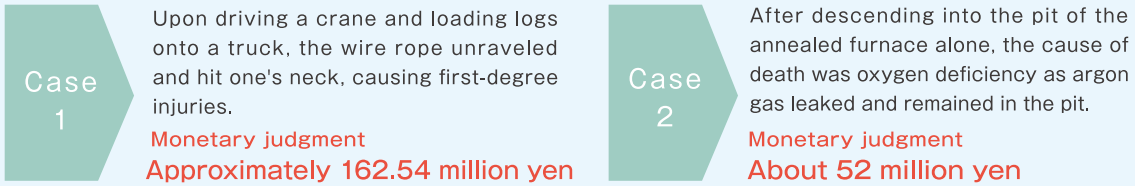
Even a higher amount of compensation for damages will be claimed.



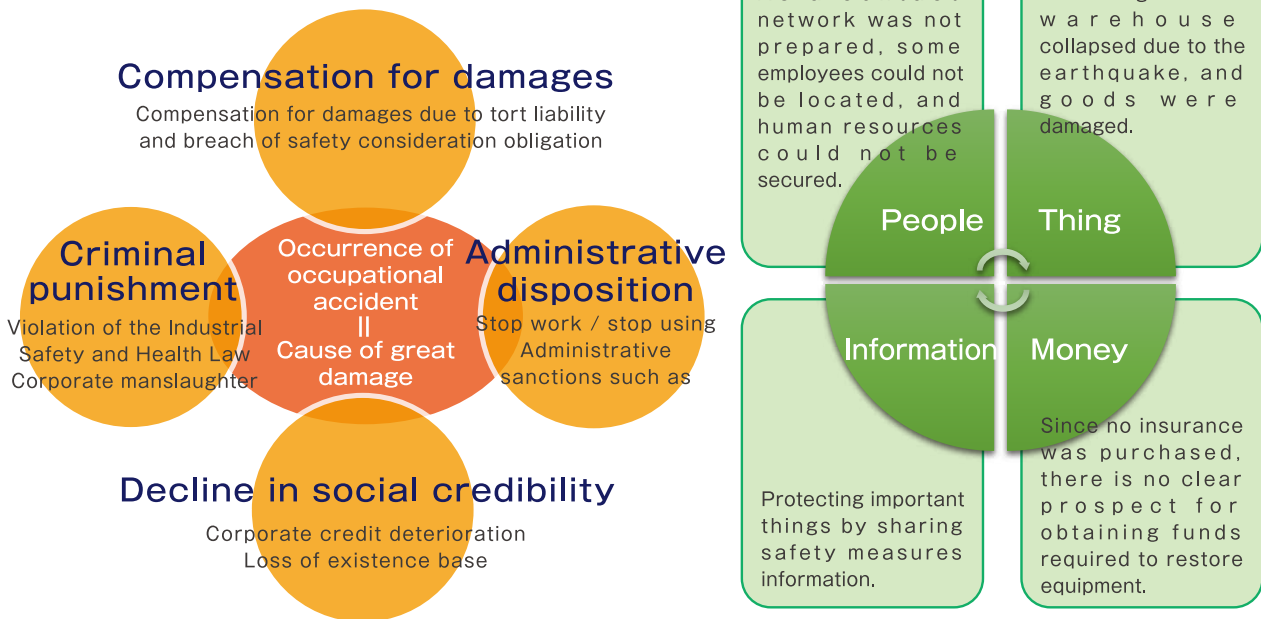
If the cargo collapses in the warehouse ...



Cases of compensation for damages due to breach of safety obligations



Responsibilities of companies in the event of a disaster



Volume over safety is the wrong idea! Above all, the most important thing is human life!

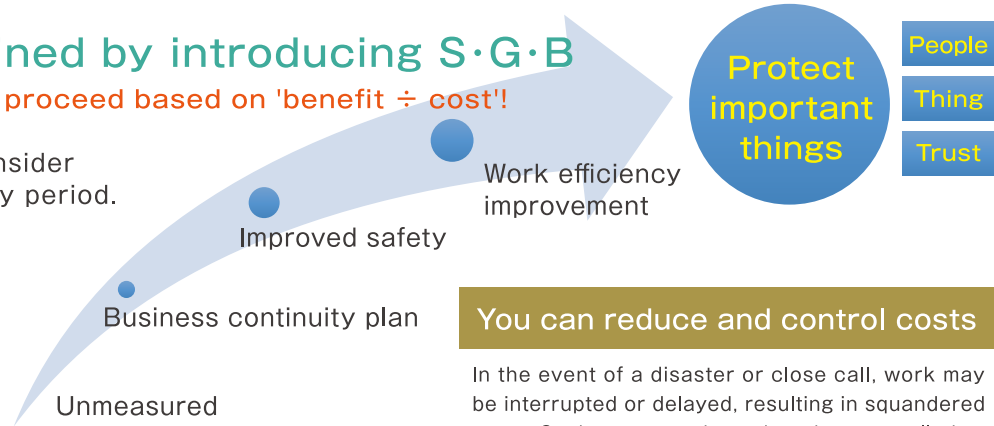
As of September 2nd year of Reiwa

Cost-effectiveness

Effects obtained by introducing S·G·B

Decide whether to proceed based on 'benefit ÷ cost'!

It is important to consider cost-effectiveness by period.



Improves worker motivation

Good communication can lighten up the workplace and improve the motivation of workers. Also, by adopting workers' opinions and carrying out activities to improve work tasks and the working environment, a more proactive working atmosphere will be created.

Improves productivity

By improving and maintaining the work environment, setup tasks can be minimized, the trouble of searching for tools is eliminated, and work efficiency and productivity is expected to improve.

You can reduce and control costs

In the event of a disaster or close call, work may be interrupted or delayed, resulting in squandered costs. Such costs can be reduced or controlled.

Benefits of adopting BCP measures

BCP is a business continuity plan. The policy sets forth no business disruption even if natural disasters or infectious diseases occur, or restoration as soon as possible.

Certification of the business continuity enhancement plan

Able to apply support measures (preferential system)!

The certification system for the "Business Continuity Enhancement Plan" is a system in which the Minister of Economy, Trade, and Industry certify plans for disaster prevention and mitigation measures formulated by small and medium-sized enterprises. Certified small and medium-sized enterprises can access support measures such as tax incentives, financial support, and subsidy points.

HP: <https://www.chusho.meti.go.jp/keiei/antei/bousai/keizokuryoku.htm>

Support measures for companies certified as a business continuity enhancement plan

- Low-interest loans from the Japan Finance Corporation
- Addition of credit guarantee line
- Tax incentives for disaster prevention and mitigation equipment
- Subsidy incentives
- Use of certified logo mark
- Assistance from companies and organizations that can cooperate with this system

SME disaster prevention/mitigation investment promoting tax system

Receive special depreciation (20%) on the acquisition price of the target equipment

Target equipment	Mechanical equipment (1 million yen or more)	Private generator, power generation pump, etc.
	Equipment / equipment (300,000 yen or more)	Seismic control / seismic isolation rack, satellite phone, etc.
	Equipment attached to the building (600,000 yen or more)	Water stop plate, disaster prevention shutter, smoke exhaust equipment, etc.

As of September 2nd year of Reiwa

Our company is searching for sales/ manufacturing agents and liscencee partners.

At factories, warehouses, and retail stores, cargo is piled up and stored. Considering cases where the stacked pallets fall over, I would like to promote countermeasures and risk assessment by contemplating occupational accidents, safety consideration obligations, and damage suffered by companies.

We would like to consider developing S·G·B(Safety Gate Box) business and eliminating accidents caused by collapsing cargo and high stacking in factories and warehouses worldwide.

We are looking for a partner who can enter into sales/manufacturing agency (license sea) contracts to protect people and cargo. Any type of business or field is welcome.



WEIGHT tokai co.,ltd. to assist all safety policy

WEIGHT WEIGHT tokai co.,ltd.

4-130-1, Yanabe Nakamachi, Handa City, Aichi Prefecture, 475-0961

TEL: 0569-32-2530 FAX: 0569-32-2531

E-mail office@weight.co.jp HP <https://www.weight.co.jp>